


## Mouse IL-1 $\beta$ protein

Cat #:PRP1119

Size: 5  $\mu$ g/20  $\mu$ g/100  $\mu$ g/1 mg

### Product Information

	<b>Product Name:</b> Mouse IL-1 $\beta$ protein		
<b>REF</b>	<b>Catalog Number:</b> PRP1119	<b>LOT</b>	<b>Lot Number:</b> Refer to product label
	<b>Purity:</b> >98% as determined by SDS-PAGE		
	<b>Storage:</b> Store at -20C		<b>Preparation method:</b> <i>E. coli</i>
	<b>Shipping:</b> The product is shipped at below ambient temperature.		

**Background:** Interleukin-1 $\beta$  (IL1 beta or IL-1 $\beta$ ) also known as catabolin, is a member of the interleukin 1 cytokine family, is produced by activated macrophages, IL-1 $\beta$  stimulates thymocyte proliferation by inducing il-2 release, b-cell maturation and proliferation, and fibroblast growth factor activity. IL-1 $\beta$  proteins are involved in the inflammatory response, being identified as endogenous pyrogens, and are reported to stimulate the release of prostaglandin from synovial cells.

**Sequence:** Amino acid sequence derived from mouse IL-1 $\beta$  protein isoform (P10749) (Val118-Ser269) was expressed.

**Protein length:** The recombinant mouse IL-1 $\beta$  protein consists of 153 amino acids and predicts a molecular mass of 17 kDa.

**Endotoxin:** < 1.0 EU per  $\mu$ g of the protein as determined by the LAL method.

**Formulation:** Lyophilized from sterile PBS, pH7.4.

**Storage Instructions:** Lyophilized mouse IL-1 $\beta$  protein product should be stored desiccated below -20C. Upon reconstitution, the protein should be stored at 4C between 2 -7 days and for future use below -20C. For long term storage it is recommended to add a carrier protein (0.1% HSA or BSA). Please prevent freeze-thaw cycles.

**Usage notes:** Always centrifuge tubes before opening. It is recommended to reconstitute the lyophilized mouse IL-1 $\beta$  protein using the buffer we provided not less than 100  $\mu$ g/ml, which can then be further diluted to other aqueous solutions.

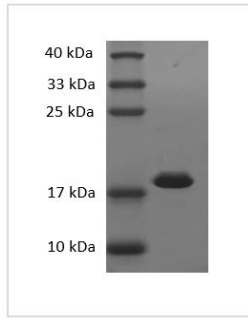


Fig. SDS-PAGE analysis of Mouse IL-1 $\beta$  protein.

**Note:** The product listed herein is for research use only and is not intended for use in human or clinical diagnosis. Suggested applications of our products are not recommendations to use our products in violation of any patent or as a license. We cannot be responsible for patent infringements or other violations that may occur with the use of this product.